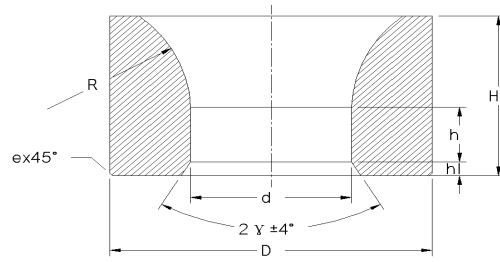
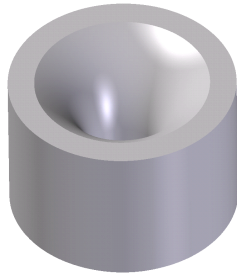


S23 型 拉制金属管材模坯

Type S23 Diameter and wall thickness reducing carbide die nibs for drawing metal tubes.



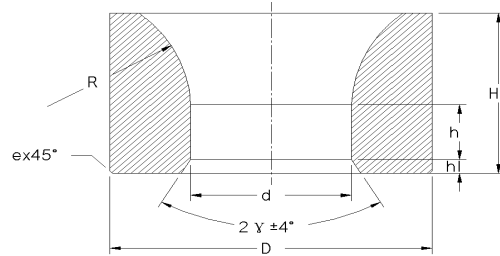
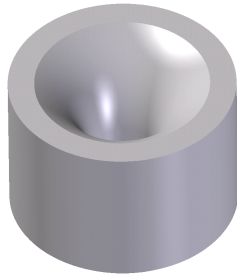
新型号 New Type	原型号 Old Type	Dimension (mm) 基本尺寸				Reference dimension(mm) 参考尺寸			
		D	H	d	2γ	h	h ₁	R	E
S23-0151000-2.7	LS23-2.7	15	10	2.5	60°	2.5	1.0	8.0	2.0
S23-0151000-3.5	LS23-3.5	15	10	3.5	60°	2.5	1.0	8.0	2.0
S23-0201400-4.3	LS23-4.3	20	14	4.3	60°	4.6	1.0	9.0	2.0
S23-0201400-4.7	LS23-4.7	20	14	4.7	60°	4.7	1.0	9.0	2.0
S23-0201400-5.1	LS23-5.1	20	14	5.1	60°	4.8	1.0	9.0	2.0
S23-0201400-5.5	LS23-5.5	20	14	5.5	60°	4.9	1.0	9.0	2.0
S23-0201400-5.9	LS23-5.9	20	14	5.9	60°	4.4	1.0	10.0	2.0
S23-0201400-6.3	LS23-6.3	20	14	6.3	60°	4.5	1.0	10.0	2.0
S23-0201400-6.9	LS23-6.9	20	14	6.9	60°	4.7	1.0	10.0	2.0
S23-0201400-7.3	LS23-7.3	20	14	7.3	60°	4.8	1.0	10.0	2.0
S23-0201400-7.5	LS23-7.5	20	14	7.5	60°	4.9	1.0	10.0	2.0
S23-0201400-7.9	LS23-7.9	20	14	7.9	60°	5.0	1.0	10.0	2.0
S23-0241800-8.4	LS23-8.4	24	18	8.4	60°	6.2	1.5	12.0	2.0
S23-0240900-8.9	LS23-8.9B	24	9	8.9	60°	2.5	2.4	4.2	1.0
S23-0241800-8.9	LS23-8.9	24	18	8.9	60°	6.7	1.5	12.0	2.0
S23-0241800-9.1	LS23-9.1	24	18	9.1	60°	6.8	1.5	12.0	2.0
S23-0241800-9.3	LS23-9.3	24	18	9.3	60°	6.8	1.5	12.0	2.0
S23-0240900-9.9	LS23-9.9B	24	9	9.9	60°	2.5	2.4	4.5	1.0
S23-0241800-9.9	LS23-9.9	24	18	9.9	60°	7.1	1.5	12.0	2.0
S23-0241800-10.3	LS23-10.3	24	18	10.3	60°	6.1	1.5	13.0	2.0
S23-0241800-10.9	LS23-10.9	24	18	10.9	60°	6.3	1.5	13.0	2.0
S23-0241800-11.6	LS23-11.6	24	18	11.6	60°	6.8	1.5	13.0	2.0
S23-0241800-12.0	LS23-12	24	18	12.0	60°	7.0	1.5	13.0	2.0
S23-0241800-12.7	LS23-12.7	24	18	12.7	60°	7.3	1.5	13.0	2.0

S23-0452400-20. 0	L23-20-45A	45	24	20.0	60°	4.0	2.5	30.0	1.5
S23-0503200-20. 0	L23-20	50	32	20.0	60°	12.0	2.0	30.0	1.5
S23-0503200-22. 0	L23-22	50	32	22.0	60°	12.0	2.0	30.0	1.5
S23-0503200-24. 0	L23-24	50	32	24.0	60°	12.0	2.0	30.0	1.5
S23-0603500-26. 0	L23-26	60	35	26.0	60°	12.0	2.0	35.0	1.5
S23-0603500-28. 0	L23-28	60	35	28.0	60°	12.0	2.0	35.0	1.5
S23-0603500-30. 0	L23-30	60	35	30.0	60°	12.0	2.0	35.0	1.5
S23-0704200-32. 0	L23-32	70	42	32.0	60°	15.0	2.5	35.0	1.5
S23-0703400-34. 0	L23-34-70A	70	34	34.0	60°	6.5	2.5	35.0	1.5
S23-07042000-34. 0	L23-34	70	42	34.0	60°	15.0	2.5	35.0	1.5
S23-0704200-36. 0	L23-32	70	42	36.0	60°	15.0	2.5	35.0	1.5
S23-0754200-38. 0	L23-38	75	42	38.0	60°	15.0	2.5	35.0	1.5
S23-0754200-40. 0	L23-40	75	42	40.0	60°	15.0	2.5	35.0	1.5
S23-0854500-42. 0	L23-42	85	45	42.0	60°	15.0	3.0	40.0	1.5
S23-0854500-44. 0	L23-44	85	45	44.0	60°	15.0	3.0	40.0	1.5
S23-0854500-46. 0	L23-46	85	45	46.0	60°	15.0	2.5	40.0	1.5
S23-1005000-48. 0	L23-48	100	50	48.0	60°	18.0	3.0	40.0	2.4
S23-1005000-50. 0	L23-50	100	50	50.0	60°	18.0	3.0	40.0	2.4
S23-1005000-52. 0	L23-52	100	50	52.0	60°	18.0	3.0	40.0	2.4
S23-1005000-54. 0	L23-54	100	50	54.0	60°	18.0	3.0	40.0	2.4
S23-1105000-56. 0	L23-56	110	50	56.0	60°	18.0	3.0	40.0	2.4
S23-1105000-58. 0	L23-58	110	50	58.0	60°	18.0	3.0	40.0	2.4

S23-1105000-60. 0	L23-60	110	50	60.0	60°	18.0	3.0	40.0	2.4
S23-1105006-62. 0	L23-62	110	50	62.0	60°	18.0	3.0	40.0	2.4
S23-1255500-64. 0	L23-64	125	55	64.0	60°	20.0	3.0	40.0	2.0
S23-1255500-66. 0	L23-66	125	55	66.0	60°	20.0	3.0	40.0	2.0
S23-1255500-68. 0	L23-68	125	55	68.0	60°	20.0	3.0	40.0	2.0
S23-1255500-70. 0	L23-70	125	55	70.0	60°	20.0	3.0	40.0	2.0
S23-1475500-72. 0	L23-72	147	55	72.0	60°	20.0	3.0	40.0	2.0
S23-1475500-76. 0	L23-76	147	55	76.0	60°	20.0	3.0	40.0	2.0
S23-1475500-79. 5	L23-79.5	147	55	79.5	60°	20.0	3.0	40.0	2.0
S23-1475500-82. 0	L23-82	147	55	82.0	60°	20.0	3.0	40.0	2.0
S23-1475500-85. 0	L23-85	147	55	85.0	60°	20.0	3.0	40.0	2.0
S23-1475500-87. 0	L23-87	147	55	87.0	60°	20.0	3.0	40.0	2.0
S23-1475500-89. 0	L23-89	147	55	89.0	60°	20.0	3.0	40.0	2.0
S23-1475500-90. 0	L23-90	147	55	90.0	60°	20.0	3.0	40.0	2.0
S23-1685500-91. 0	L23-91	168	55	91.0	60°	20.0	4.0	50.0	2.0
S23-1685500-94. 0	L23-94	168	55	94.0	60°	20.0	4.0	50.0	2.0
S23-1685500-101. 0	L23-101	168	55	101.0	60°	20.0	4.0	50.0	2.0
S23-1685500-104. 0	L23-104	168	55	104.0	60°	20.0	4.0	50.0	2.0
S23-1685500-107. 0	L23-107	168	55	107.0	60°	20.0	4.0	50.0	2.0
S23-1685500-109. 0	L23-109	168	55	109.0	60°	20.0	4.0	50.0	2.0
S23-1685500-111. 0	L23-111	168	55	111.0	60°	20.0	4.0	50.0	2.0
S23-1685500-113. 0	L23-113	168	55	113.0	60°	20.0	4.0	50.0	2.0

S23-200600-125. 0	L23-125	200	60	125.0	60°	22.0	5.0	45.0	2.0
----------------------	---------	-----	----	-------	-----	------	-----	------	-----

S23 型 拉制金属管材模坯 Diameter and wall thickness reducing carbide dies for drawing metal tubes



新型号 New Type	原型号 Old Type	Dimension (mm) 基本尺寸				Reference dimension(mm) 参考尺寸			
		D	H	d	2γ	h	h ₁	R	E
S23-0684000-31. 0	23-31-68	68	40	31.0	60	15.0	2.5	35.0	1.0
S23-0684000-33. 0	23-33-68	68	40	33.0	60	15.0	2.5	35.0	1.0
S23-0684000-34. 0	23-34-68	68	40	34.0	60	15.0	2.5	35.0	1.0
S23-0684000-35. 0	23-35-68	68	40	35.0	60	15.0	2.5	35.0	1.0
S23-0684000-36. 0	23-36-68	68	40	36.0	60	15.0	2.5	35.0	1.0
S23-0684000-37. 0	23-37-68	68	40	37.0	60	15.0	2.5	35.0	1.0
S23-0724200-38. 0	23-38-72	72	42	38.0	60	15.0	2.5	35.0	1.0
S23-0724200-40. 0	23-40-72	72	42	40.0	60	15.0	2.5	35.0	1.0
S23-0824200-42. 0	23-42-82	82	42	42.0	60	15.0	2.5	35.0	1.0
S23-0824200-44. 0	23-44-82	82	42	44.0	60	15.0	2.5	35.0	1.0
S23-0824200-46. 0	23-46-82	82	42	46.0	60	15.0	2.5	35.0	1.0
S23-0954700-48. 0	23-48-95	95	47	48.0	60	18.0	2.5	40.0	1.0
S23-0954700-50. 0	23-50-95	95	47	50.0	60	18.0	2.5	40.0	1.0

S23-0954700-52.0	23-52-95	95	47	52.0	60	18.0	2.5	40.0	1.0
S23-0954700-54.0	23-54-95	95	47	54.0	60	18.0	2.5	40.0	1.0
S23-1054700-54.0	23-54-105	105	47	54.0	60	18.0	3.0	40.0	1.0
S23-1054700-56.0	23-56-105	105	47	56.0	60	18.0	3.0	40.0	1.0
S23-1054700-58.0	23-58-105	105	47	58.0	60	18.0	3.0	40.0	1.0
S23-1054700-60.0	23-60-105	105	47	60.0	60	18.0	3.0	40.0	1.0
S23-1054700-62.0	23-62-105	105	47	62.0	60	18.0	3.0	40.0	1.0
S23-1054700-64.0	23-64-105	105	47	64.0	60	18.0	3.0	40.0	1.0
S23-1205200-66.0	23-66-120	120	52	66.0	60	19.0	3.0	40.0	1.0
S23-1205200-68.0	23-68-120	120	52	68.0	60	19.0	3.0	40.0	1.0

S23 改进型号拉制金属管材模坯

Diameter and wall thickness reducing carbide dies for drawing metal tubes

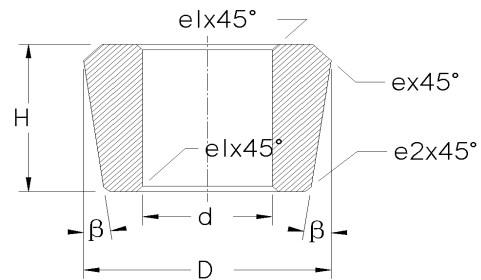
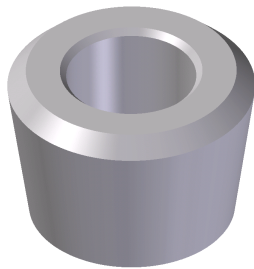
新型号 New Type	Dimension (mm) 基本尺寸				Reference dimension(mm) 参考尺寸				
	D	H	d	2γ	D1	h	h ₁	R	e
S23-0201500-6-2.5°	20	15	6	45°	16	5	2	8.9	1.0
S23-0251600-8-2.5°	25	16	8	45°	20	5	2	9.8	1.0
S23-0281800-10-2.5°	28	18	10	45°	23	6	2	10.9	1.0
S23-0322200-12-2.5°	32	22	12	45°	28	6	3	14.6	1.0
S23-0352200-14-2.5°	35	22	14	45°	30	6	3	14.6	1.0
S23-0382500-16-2.5°	38	25	16	45°	34	6	3	18.7	1.0
S23-0402500-18-2.5°	40	25	18	45°	35	6	3	18.9	1.0
S23-0402500-20-2.5°	40	25	20	45°	35	6	3	20.8	1.0
S23-0452500-21-2.5°	45	25	21	45°	40	6	3	18.2	1.0
S23-0452500-23-2.5°	45	25	23	45°	40	6	3	19.3	1.0
S23-0452500-25-2.5°	45	25	25	45°	40	6	3	20.8	1.0
S23-0503000-27-2.5°	50	30	27	45°	44	6	4	27.8	1.5
S23-0553000-30-2.5°	55	30	30	45°	50	7	4	23.1	1.5
S23-0553000-32-2.5°	55	30	32	45°	50	7	4	24.6	1.5
S23-0603200-36-2.5°	60	32	36	45°	54	7	5	26.7	1.5

S23-0603200-38-2.5°	60	32	38	45°	54	7	5	29.0	1.5
S23-0753500-45-2.5°	75	35	45	45°	69	7	5	28.0	1.5
S23-0753500-48-2.5°	75	35	48	45°	69	7	5	30.4	1.5
S23-0854000-58-2.5°	85	40	58	45°	79	7	5	42.6	1.5

金属管材芯头拉伸模坯

S30 型 拉制金属管材芯棒模坯

Type S30 Carbide floating plugs for drawing metal tubes

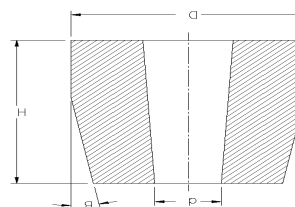
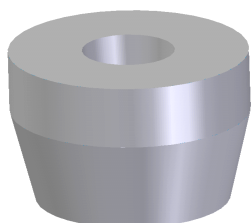


新型号 New Type	原型号 Old Type	Dimension (mm) 基本尺寸				Reference dimension(mm) 参考尺寸		
		D	H	d	β	e	e ₁	e ₂
S30-101308-22.0	LS30-22A	22	13	10	8°	1.5	1.0	1.0
S30-121608-23.5	LS30-23	23.5	16	12	8.5°	1.0	1.0	1.0
S30-141608-24.5	LS30-24	24.5	16	14	8.5°	1.0	1.0	1.0
S30-141608-25.5	LS30-25	25.5	16	14	8.5°	1.0	1.0	1.0
S30-141708-27.0	LS30-27A	27	17	14	8.5°	1.5	1.0	1.0
S30-141608-27.5	LS30-27	27.5	16	14	8.5°	2.0	1.0	1.0
S30-172708-28.0	LS30-28	28.0	27	17	8.5°	2.0	1.0	1.0
S30-172708-29.2	LS30-29	29.2	27	17	8.5°	2.0	1.0	1.0
S30-172708-30.4	LS30-30	30.4	27	17	8.5°	2.0	1.0	1.0
S30-172708-31.6	LS30-31	31.6	27	17	8.5°	2.0	1.0	1.0
S30-172708-32.2	LS30-32	32.2	27	17	8.5°	2.0	1.0	1.0
S30-172710-32.8	LS30-32A	32.8	32	12	10°	2.0	2.0	1.5
S30-172708-33.4	LS30-33	33.4	27	17	8.5°	2.0	1.0	1.0
S30-172708-34.0	LS30-34	34.0	27	17	8.5°	2.0	1.0	1.0
S30-133810-34.0	LS30-34A	34.0	38.8	13	10.5°	5.0	2.0	2.0
S30-172708-35.2	LS30-35	35.2	27	17	8.5°	2.0	1.0	1.0
S30-172708-36.4	LS30-36	36.4	27	17	8.5°	2.0	1.0	1.0
S30-192708-37.0	LS30-37	37.0	27	19	8.5°	2.0	1.0	1.0
S30-192708-38.2	LS30-38	38.2	27	19	8.5°	2.0	1.0	1.0
S30-192708-39.4	LS30-39	39.4	27	19	8.5°	2.0	1.0	1.0
S30-212708-40.0	LS30-40	40.0	27	21	8.5°	3.0	1.0	1.0
S30-212708-41.0	LS30-41	41.0	27	21	8.5°	3.0	1.0	1.0
S30-212708-42.0	LS30-42	42.0	27	21	8.5°	3.0	1.0	1.0
S30-212708-43.0	LS30-43	43.0	27	21	8.5°	3.0	1.0	1.0

S30-233208-44.0	LS30-44	44.0	32	23	8.5°	3.0	1.0	1.0
S30-233208-45.0	LS30-45	45.0	32	23	8.5°	3.0	1.0	1.0
S30-233208-46.0	LS30-46	46.0	32	23	8.5°	3.0	1.0	1.0
S30-253208-47.0	LS30-47	47.0	32	25	8.5°	4.0	1.0	1.0
S30-253208-48.0	LS30-48	48.0	32	25	8.5°	4.0	1.0	1.0
S30-253208-49.0	LS30-49	49.0	32	25	8.5°	4.0	1.0	1.0
S30-253208-50.0	LS30-50	50.0	32	25	8.5°	4.0	1.0	1.0
S30-253208-51.0	LS30-51	51.0	32	25	8.5°	4.0	1.0	1.0
S30-253208-52.0	LS30-52	52.0	32	25	8.5°	4.0	1.0	1.0
S30-253208-53.0	LS30-53	53.0	32	25	8.5°	4.0	1.0	1.0
S30-283208-54.0	LS30-54	54.0	32	28	8.5°	4.0	1.0	1.0
S30-283208-55.0	LS30-55	55.0	32	28	8.5°	4.0	1.0	1.0
S30-283208-56.0	LS30-56	56.0	32	28	8.5°	4.0	1.0	1.0
S30-283208-57.0	LS30-57	57.0	32	28	8.5°	4.0	1.0	1.0
S30-283508-58.0	LS30-58	58.0	35	28	8.5°	4.0	1.0	1.0
S30-283508-59.0	LS30-59	59.0	35	28	8.5°	4.0	1.0	1.0
S30-283508-60.0	LS30-60	60.0	35	28	8.5°	4.0	1.0	1.0
S30-283508-61.0	LS30-61	61.0	35	28	8.5°	4.0	1.0	1.0
S30-283508-62.0	LS30-62	62.0	35	28	8.5°	4.0	1.0	1.0
S30-283508-63.0	LS30-63	63.0	35	28	8.5°	4.0	1.0	1.0
S30-283508-64.0	LS30-64	64.0	35	28	8.5°	4.0	1.0	1.0
S30-343509-68.0	LS30-68	68.0	35	34	9°	5.0	3.0	2.0
S30-343509-71.0	LS30-71	71.0	35	34	9°	5.0	3.0	2.0
S30-383509-75.0	LS30-75	75.0	35	38	9°	5.0	3.0	2.0
S30-383509-77.0	LS30-77	77.0	35	38	9°	5.0	3.0	2.0
S30-423509-80.0	LS30-80	80.0	35	42	9°	5.0	3.0	2.0
S30-423509-82.0	LS30-82	82.0	35	42	9°	5.0	3.0	2.0
S30-473509-86.0	LS30-86	86.0	35	47.8	9°	5.0	3.0	2.0
S30-473509-88.0	LS30-88	88.0	35	47.8	9°	6.0	3.0	2.0
S30-483509-91.0	LS30-91	91.0	35	48	9°	6.0	3.0	2.0
S30-483509-94.0	LS30-94	94.0	35	48	9°	6.0	3.0	2.0
S30-583509-99.0	LS30-99	99.0	35	58	9°	6.0	3.0	2.0
S30-583509-102.0	LS30-102	102.0	35	58	9°	6.0	3.0	2.0
S30-583509-105.0	LS30-105	105.0	35	58	9°	6.0	3.0	2.0

S30-A 型拉制金属管材芯棒模坯

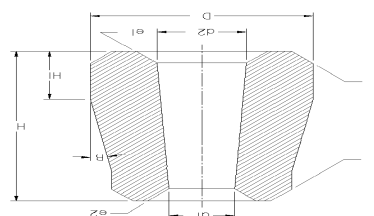
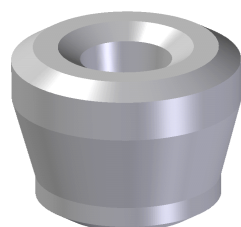
Type S30-A、S30-AF Carbide floating plugs for drawing metal tubes



新型号 New Type	原型号 Old Type	Dimension (mm) 基本尺寸			Reference dimension(mm) 参考尺寸
		D	H	d	B
S30-122108-35.0-A	LS30-35A	35	21	12	8°
S30-162308-40.0-A	LS30-40A	40	23	16	8°
S30-162508-45.0-A	LS30-45A	45	25	16	8°
S30-182808-50.0-A	LS30-50A	50	28	18	8°
S30-183008-55.0-A	LS30-55A	55	30	18	8°
S30-223208-60.0-A	LS30-60A	60	32	22	8°
S30-223408-65.0-A	LS30-65A	65	34	22	8°

S30-AB 型 拉制金属管材芯棒模坯

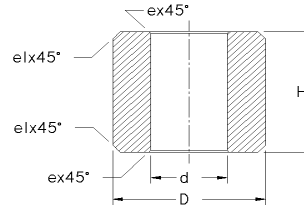
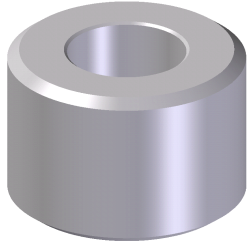
Type S30-AB Carbide floating plugs for drawing metal tubes



	原型号 Old Type	Dimension (mm) 基本尺寸					Reference dimension(mm) 参考尺寸				
		D	H	H ₁	d	d ₁	e	a	e ₁	e ₂	β
	LS30-21AB	21	25	8	18	6	2	2	2.0		9.5°
	LS30-20.6AB	20.6	25	8	18.4	6	2	2	2.0		9.5°
	LS30-25.2AB	25.2	30	8	21.5	8	2	2	2.0		9.5°
	LS30-27AB	27	30	8	24.2	8	2	2	2.0		9.5°
	LS30-22.6AB	22.6	32	10.5	20.1	8	R8	2	2.0		10.5°
	LS30-10AB	10	25	6	8	4	1	1	1.0		9.5°
	LS30-11AB	11	25	6	9	4	1	1	1.0		9.5
	LS30-12AB	12	25	6	10	4	1	1	1.0	0.6	9.5
	LS30-13AB	13	25	6	10	4	1	1	1.0	0.6	9.5
	LS30-14AB	14	25	6	12	4	1	1	1.0	0.6	9.5
	LS30-14ABC	14	25	6	11	4	1	1	1.0	0.6	9.5
	LS30-15AB	15	25	8	13	6	1	1	1.0	0.6	9.5
	LS30-15ABC	15	25	8	12	6	1	1	1.0	0.6	9.5
	LS30-16AB	16	25	8	14	6	1.5	1.1	1.5	1.1	9.5
	LS30-17AB	17	25	8	14	6	1.5	1.1	1.5	1.1	9.5
	LS30-18AB	18	25	8	15	6	1.5	1.1	1.5	1.1	9.5
	LS30-18ABC	18	25	8	16	6	1.5	1.1	1.5	1.1	9.5
	LS30-19AB	19	25	8	16	8	1.5	1.1	1.5	1.1	9.5
	LS30-20AB	20	25	8	18	8	1.5	1.1	1.5	1.1	9.5
	LS30-20ABC	20	25	8	17	8	1.5	1.1	1.5	1.1	9.5
	LS30-21AB	21	25	8	18	8	1.5	1.1	1.5	1.1	9.5
	LS30-22AB	22	25	8	19	8	1.5	1.1	1.5	1.1	9.5
	LS30-23AB	23	30	9	20	10	1.5	1.1	1.5	1.1	9.5
	Fx-02123	24	30	9	21	10	1.5	1.1	1.5	1.1	9.5
	Fx-02124	25	30	9	22	10	1.5	1.1	1.5	1.1	9.5
	Fx-02030	26	31	11	22.9	10	1.5	1.1	1.5	1.1	9.5
	Fx-02125	26	30	9	23	10	1.5	1.1	1.5	1.1	9.5
	Fx-02126	27	30	9	24	10	1.5	1.1	1.5	1.1	9.5
	Fx-02127	28	35	10	25	12	1.5	1.1	1.5	1.1	9.5
	Fx-02128	29	35	10	26	12	1.5	1.1	1.5	1.1	9.5
	Fx-02129	30	35	10	27	12	1.5	1.1	1.5	1.1	9.5
	Fx-02130	31	35	10	28	12	1.5	1.1	1.5	1.1	9.5

S31 型 拉制金属管材芯棒模坯

Type S31 Carbide floating plugs for drawing metal tubes



新型号 New Type	原型号 Old Type	Dimension (mm) 基本尺寸			Reference dimension(mm) 参考尺寸	
		D	H	d	e ₁	e
S31-0142500-7.0	S31-14	14	25	7.0	1.0	0.5
S31-0152500-7.0	S31-15	15	25	7.0	1.0	0.5
S31-0162500-7.0	S31-16	16	25	7.0	1.0	0.5
S31-0172500-8.0	S31-17	17	25	8.0	1.0	0.5
S31-0182500-8.0	S31-18	18	25	8.0	1.0	0.5
S31-0193000-10.0	S31-19	19	30	10.0	1.0	0.5
S31-0203000-10.0	S31-20	20	30	10.0	1.0	0.5
S31-0213000-10.0	S31-21	21	30	10.0	1.0	0.5
S31-0223000-10.0	S31-22	22	30	10.0	1.0	0.5
S31-0233000-12.0	S31-23	23	30	12.0	1.0	0.5
S31-0243000-12.0	S31-24	24	30	12.0	1.0	0.5
S31-0253000-12.0	S31-25	25	30	12.0	1.0	0.5
S31-0263000-12.0	S31-26	26	30	12.0	1.0	0.5
S31-0273000-12.0	S31-27	27	30	12.0	1.0	0.5
S31-0283500-16.0	S31-28	28	35	16.0	1.0	0.5
S31-0293500-16.0	S31-29	29	35	16.0	1.0	0.5
S31-0303500-16.0	S31-30	30	35	16.0	1.0	0.5
S31-0313500-16.0	S31-31	31	35	16.0	2.0	0.5
S31-0323500-16.0	S31-32	32	35	16.0	2.0	0.5

S31-0333500-20.0	S31-33	33	35	20.0	2.0	0.5
S31-0343500-20.0	S31-34	34	35	20.0	2.0	0.5
S31-0353500-20.0	S31-35	35	35	20.0	2.0	0.5
S31-0363500-20.0	S31-36	36	35	20.0	2.0	0.5
S31-0373500-20.0	S31-37	37	35	20.0	2.0	0.5
S31-0383500-20.0	S31-38	38	35	20.0	2.0	0.5
S31-0393500-20.0	S31-39	39	35	20.0	2.0	0.5
S31-0403500-20.0	S31-40	40	35	20.0	2.0	0.5
S31-0413500-20.0	S31-41	41	35	20.0	2.0	0.5
S31-0423500-20.0	S31-42	42	35	20.0	2.0	0.5
S31-0434000-22.0	S31-43	43	40	22.0	2.0	0.5
S31-0444000-22.0	S31-44	44	40	22.0	2.0	0.5
S31-0454500-26.4	S31-45	45	45	26.4	2.0	0.5
S31-0464500-26.4	S31-46	46	45	26.4	2.0	0.5
S31-0474500-26.4	S31-47	47	45	26.4	2.0	0.5
S31-0484500-26.4	S31-48	48	45	26.4	2.0	0.5
S31-0504500-26.4	S31-50	50	45	26.4	2.0	0.5

YD30 拉制金属管材芯棒模坯 Carbide cored rod for drawing metal tubes

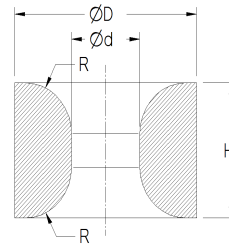
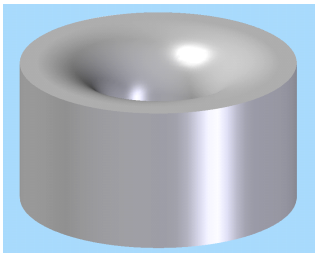
新型号 New Type	原型号 Old Type	Dimension (mm) 基本尺寸			Reference dimension(mm) 参考尺寸				
		D	D1	H	R	R1	h1	h2	h3
YD30-1	YD30-1	22	19	30	11	3	9	8	7
YD30-2	YD30-2	25	22	34	12.5	3	10	8	8
YD30-3	YD30-3	25.5	22.5	34	12.8	3	10	8	8

YD30-4	YD30-4	27.5	14.5	34	13.8	3	10	5.6	8
YD30-5	YD30-5	28	26	34	14	3	10	5.6	9
YD30-6	YD30-6	30.6	27.2	35	15.3	3	10	9.4	8
YD30-7	YD30-7	31.6	28	35	15.8	3	10	10	8
YD30-8	YD30-8	11.5	9.5	26	5.8	3	8	5.5	9
YD30-9	YD30-9	12.5	10.5	26	6.3	3	8	5.5	9
YD30-10	YD30-10	13.5	11.5	26	6.8	3	8	5.5	9
YD30-11	YD30-11	14.5	12.5	28	7.3	3	9	5.5	9
YD30-12	YD30-12	15.5	13.5	28	7.8	3	9	5.5	9
YD30-13	YD30-13	17	14	28	8.5	3	8.8	8.1	8.9
YD30-14	YD30-14	18.1	15.1	32	9.1	3	11.5	8	7
YD30-15	YD30-15	18.5	15.8	32	9.3	3	12.4	6.5	7
YD30-16	YD30-16	19.3	17	32	9.7	3	7	6.2	7
YD30-17	YD30-17	20.3	17.5	32	10.2	3	12.6	7.8	7
YD30-18	YD30-18	26.5	23.5	34	13	3	10	8.3	8
YD30-19	YD30-19	29.6	26	34	15	3	10	10	9
YD30-20	YD30-20	31.6	28.6	35	16	3	10	8.3	8

异型拉丝模 Non-standard drawing die

过线模 Prr

型号规格表示方法（新型号和原型号） Type and specification(new and old type)

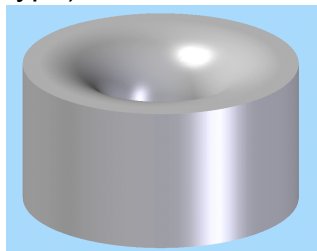


新型号 New Type	原型号 Old Type	Dimension (mm) 基本尺寸			Reference dimension(mm) 参考尺寸	
		D	H	d	R	D1
Prr-8x3x15-R7/3.5	Prr-8x3x15-R7/3.5	8	15.0	3.0	7.0/3.5	6
Prr-12x7.2x19.5-R4		12	19.5	7.2	4.0	-
Prr-12.8x6.4x12.8-R11.3		12.8	12.8	6.4	11.3	10.3
Prr-13x4x10-R3.6	Prr-13x4x10-R3.6	13	4.0	10.0	3.6	12
Prr-13x7x10-R3.6	Φ13×Φ7×10R3.6	13	10.0	7.0	3.6	12
Prr-13.9x8x10-R4.4	Φ13.9×Φ8×10-R4.4	13.9	10.0	8.0	4.4	12

Prr-15x10x10-R5.4	Prr-15x10x10-R5.4	15	10.0	10.0	5.4	13
Prr-16x8x16-R14	Prr-16x8x16-R14	16	16.0	8.0	14	13
Prr-17x12x10-R3	17×12×10	17	10.0	12.0	3.0	15
Prr-19.2x9.6x19.2-R17.4		19.2	19.2	9.6	17.4	15.4
Prr-22x8x18-R5	Φ22×Φ8×18R5	22	18.0	8.0	5.0	18
Prr-22x10x18-R7.5	Prr-22x10x18-R7.5 过	22	18.0	10.0	7.5	18
Prr-22x12x18-R7.5	Φ22×Φ12×18R7.5	22	18.0	12.0	7.5	18
Prr-25x12.7x25-R23		25	25.0	12.7	23.0	20
Prr-28x15x30-R10	Φ28×Φ15×30R10	28	30.0	15.0	10.0	24
Prr-30x18x20-R15	Prr-30x18x20-R15	30	20.0	18.0	15.0	25.6
Prr-30x12x20-R15	PR30×12×20-R15	30	20.0	12.0	15.0	22
Prr-32x16x32-R29		32	20.0	16.0	29.0	25.6
Prr-35x18x35-R10	Φ35×Φ18×35R10	35	35.0	18.0	10.0	31
Prr-36x15x13.5-R2/3		36	13.5	15.0	2.0/3.0	-
Prr-40x25x50-R15	Φ40×Φ25×50R15	40	50.0	25.0	15.0	36
Prr-40x20x35-R12	Φ40×Φ20×35R12	40	35.0	20.0	12.0	36
Prr-45x30x50-R15	Φ45×Φ30×50R15	45	50.0	30.0	15.0	41
Prr-45x28x50-R15	Φ45×Φ28×50R15	45	50.0	28.0	15.0	41
Prr-45x24x35-R12	Prr-45x24x35-R12	45	35.0	24.0	12.0	41

Pr 喷粉模 Powder spraying dies

型号规格表示方法（新型号和原型号） type and specification(new type and old type)

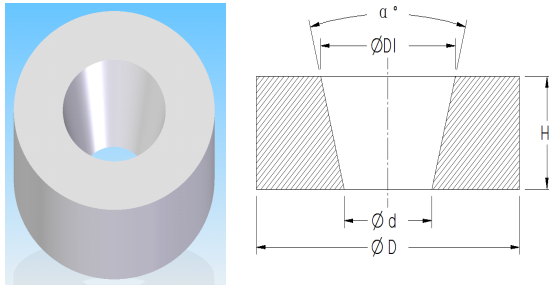


新型号 New Type	原型号 Old Type	Dimension (mm) 基本尺寸			Reference dimension(mm) 参考尺寸	
		D	d	H	R	D1
Pr-12x2.5x20-R3.5	PL-2.5-12X20R3.5	12	2.5	20	3.5	-
Pr-12x3.2x20-R3.0	PL-3.2-12X20R3.0	12	3.2	20	3.0	-
Pr-12x4.0x20-R2.8	PL-4.0-12X20R2.8	12	4.0	20	2.8	-
Pr-12x5.0x20-R2.8	PL-5.0-12×20R2.8	12	5.0	20	2.8	-
Pr-15x2.5x20-R4.5	PL-2.5-15X20R4.5	15	2.5	20	4.5	-
Pr-15x3.2x20-R4.2	PL-3.2-15X20R4.2	15	3.2	20	4.2	-
Pr-15x3.8x20-R4.0	PL-3.8-15X20R4.0	15	3.8	20	4.0	-
Pr-15x4x20-R5.0	PL-4.0-15-20R5.0	15	4.0	20	5.0	13

Pr-15x5.0x20-R3.5	PL-5.0-15X20R3.5	15	5.0	20	3.5	-
Pr-15x6x20-R5.0	PL-6.0-15-20R5.0	15	6.0	20	5.0	13
Pr-21x9.0x12-R3.0	Φ21×Φ9×12.0	21	9.0	12	3.0	-
Pr-24x9.0x16-R3.0	Φ24×Φ9×16-R3.0	24	9.0	16	3.0	-

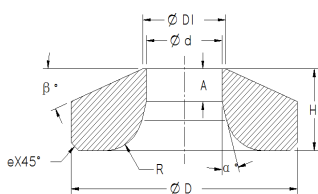
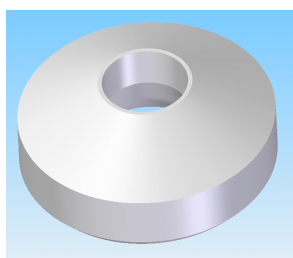
剥皮模 Peeling dies

LP



新型号 New Type	原型号 Old Type	Dimension (mm) 基本尺寸			Reference dimension(mm) 参考尺寸	
		D	H	d	D1	A
LP-13x5x1	Φ13×Φ1×5-B7	13	5	1.0	7	60
LP-15x6x4	Φ15×Φ4×6-B10	15	6	4.0	10	60
LP-18x25x5	Φ18×Φ8/5×25-11	18	25	5.0	8	11
LP-20x25x6.5	Φ20×Φ10/6.5×25-11	20	25	6.5	10	11
LP-20x6x7	Φ20×Φ7×6-B14	20	6	7.0	14	60
LP-22x6x9	Φ22×Φ9×6-B15	22	6	9.0	15	60
LP-25x7x12	Φ25×Φ18/12×7	25	7	12.0	18	50
LP-20x6x8	Φ20×Φ8/13×6	20	6	8.0	13	53
LP-22x6x10	Φ22×Φ10-15×6	22	6	10.0	15	53
LP-22x25x8	Φ22×Φ12/8×25-11	22	25	8.0	12	11
LP-25x25x10	Φ25×Φ14/10×25-11	25	25	10.0	14	11
LP-30x8x14	Φ30×Φ23/14×8	30	8	14.0	23	62
LP-35x8x19	Φ35×Φ27/19×8	35	8	19.0	27	57
LP-32.5x10x11.5	Φ32.5×Φ11.5×10	32.5	10	11.5	16	24
LP-32.5x10x12	Φ32.5×Φ12×10	32.5	10	12.0	16.5	24
LP-32.5x10x15	Φ32.5×Φ15×10	32.5	10	15.0	19.5	24

LT



新型号 New Type	原型号 Old Type	Dimension (mm) 基本尺寸			Reference dimension(mm) 参考尺寸					
		D	H	d	h1	d1	a	β	R	e
LT-20x5.5x15	LT-20x5.5x15	20	15	5.5	3	-	7	-	2	2
LT-22x5.5x15- β	LZ-821189-B-5.5	22	15	5.5	2.8	-	7	-	2	2
LT-22x5.5x15	LZ-821189	22	15	5.5	2.8	12	7	30	2	2
LT-60x34x21	L041680	60	21	34	-	35.5	12	17	-	1.5
LT-50x21x17	LB \varnothing 50 \times \varnothing 21 \times 17	50	17	21	-	22	6	16	-	3
LT-60x40x20	LB \varnothing 60 \times \varnothing 40 \times 20	60	20	40	-	41	6	16	-	3
LT-60x38x20	LB \varnothing 60 \times \varnothing 38 \times 20	60	20	38	-	39	6	16	-	3
LT-60x36x20	LB \varnothing 60 \times \varnothing 36 \times 20	60	20	36	-	37	6	16	-	3
LT-60x35x20	LB \varnothing 60 \times \varnothing 35 \times 20	60	20	35	-	36	6	16	-	3
LT-70x55x20	LB \varnothing 70 \times \varnothing 55 \times 20	70	20	55	-	56	6	16	-	3

涂粉模 Power Coating dies
Pa

新型号 New Type	原型号 Old Type	Dimension (mm) 基本尺寸			Reference dimension(mm) 参考尺寸		
		D	H	d	a	d1	h1
Pa-1.4x5.54x14.4	PL1.4-5.54x14.4	5.54	14.4	1.4	11/47	-	8.7/10.7
Pa-2.7x12X20	PL-2.7-12X20	12	20	2.7	90	-	3.8
Pa-3.4x12X20	PL-3.4-12X20	12	20	3.4	90	-	3.8
Pa-4.2x12X20	PL-4.2-12X20	12	20	4.2	90	-	3.8
Pa-6.3x12X20	PL-6.3-12X20	12	20	6.3	90	-	3.8
Pa-6.5x12X20	PL-6.5-12X20	12	20	6.5	90	-	3.8
Pa-2.2x15x20		15	20	2.2	120	-	2.5
Pa-2.7x15x20		15	20	2.7	120	-	2.5
Pa-2.4x15X20	PL-2.4-15X20	15	20	2.4	120	-	3.7
Pa-3.4x15x20	PL-3.4x15x20	15	20	3.4	120	12	2.5
Pa-4.0x15x20	PL-4.0x15x20	15	20	4.0	120	12	1.2

Pa-4.2x15x20	PL-4.2-15x20	15	20	4.2	120	12	2.3
Pa-4.7x15x19	PL-4.7-15x19	15	19	4.7	120	14	2.7
Pa-5.1x15x20	PL-5.1x15x20	15	20	5.1	120	12	1.2
Pa-5.3x15x20	PL-5.3x15x20	15	20	5.3	120	12	1.2
Pa-5.8x15x20		15	20	5.8	120	-	1.8
Pa-6.1x15x20	PL-6.1x15x20	15	20	6.1	120	12	1.2
Pa-6.3x15x20	PL-6.3x15x20	15	20	6.3	120	12	1.2
Pa-7.7x15x20	PL-7.7x15x20	15	20	7.7	120	12	1.2
Pa-7.9x15x20	PL-7.9x15x20	15	20	7.9	79	12	2.5
Pa-9.0x18x21.8	Φ18×Φ9×21.8	18	21.8	9.0	53	11.6	7.3